

# Original BMW Accessories.

## Installation Instructions.



### 19-Inch M Performance Sport Brake Retrofit.

Front and rear axle with lightweight perforated sport brake disks.

**BMW 5 Series (G30/G31)**

**BMW 7 Series (G11/G12)**

**Retrofit kit only suitable for approved wheels (see EPC and also section 7 for details).**

#### Retrofit kit number

34 11 2 289 348      Front and rear axle sport brake retrofit kit

#### Installation time

The installation time is **approx. 3.0 hours**. This may vary depending on the condition of the car and its equipment.

The installation time shown does not include any time spent on programming/coding.

The calculation of the total costs for the programming time must be factored into the calculation of retrofitting costs (no invoicing via warranty).

#### Important information

**Customer information G (Part No. 01 29 2 411 431) must be given to the customer.**

These installation instructions are primarily designed for use within the BMW dealership organisation and by authorised BMW service companies.

These installation instructions are intended for use by qualified specialist staff trained on BMW cars with the relevant expert knowledge.

All work must be completed using the latest BMW repair manuals, wiring diagrams, servicing manuals and work instructions, in a logical order, using the prescribed tools (special tools), and observing current health and safety regulations.

**If you experience installation or function problems, restrict troubleshooting to approx. 0.5 hours for mechanical work and 1.0 hour for electrical work.**

To avoid unnecessary extra work and/or costs, send an inquiry straight away to the technical parts support team via the Aftersales Assistance Portal (ASAP).

Quote the following information:

- VIN,
- Retrofit kit part number,
- A detailed description of the problem,
- any work already carried out.

Do not archive the hard copy of these installation instructions, since daily updates are provided via ASAP.

## Pictograms



Denotes instructions that draw your attention to dangers.



Denotes instructions that draw your attention to special features.



Denotes the end of the instruction or other text.

## Installation information

All illustrations show LHD cars; proceed similarly on RHD cars.

## Ordering instructions

For the vehicle assignment, see the latest information in the EPC.

## Note for the customer (important documents and information for the customer)

The workshop certificate (see appendix) must be completed and given to the customer with customer information **G** and the TÜV report/parts approval.

The customer must be told that national acceptance and a modification of the vehicle's paperwork are required because the brake system data relevant for the approval have changed. Correct installation must be confirmed by an officially-approved expert or examiner.

The design characteristics of the perforated brake disks mean that they may generate noise during use; however this does not affect the stability of the brake system.



Run in the M Performance sport brake carefully for the first 200 km. After this, the full sporty characteristics of the brake system can develop.

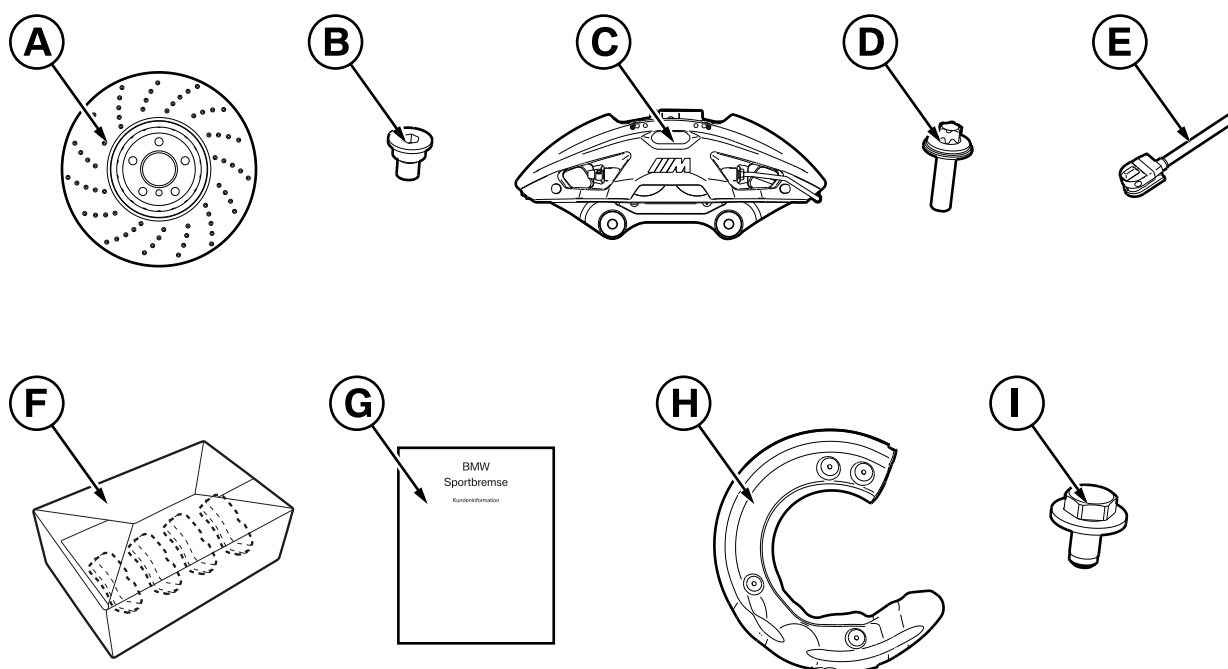
## Special tools required

34 1 050 Brake piston tool

Table of contents

Section	Page
1. Front axle parts list .....	4
2. Rear axle parts list .....	5
3. Preparatory work .....	6
4. Front axle installation work .....	7
5. Rear axle installation work .....	8
6. Concluding work and coding .....	9
7. Approved wheels .....	10
8. Workshop certificate .....	11

## 1. Front axle parts list

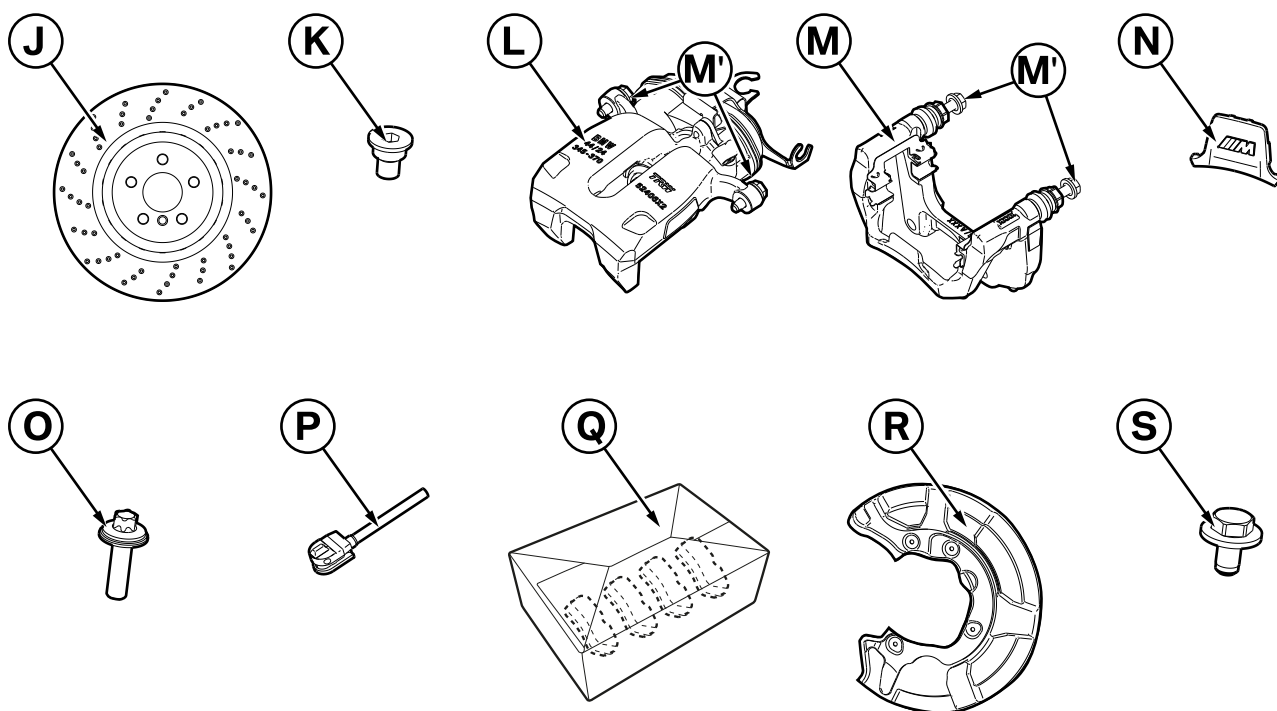


G30 0000 V

### Legend

- A** Lightweight, perforated front brake disk (2x, left/right)
- B** Hexagon socket screw for brake disk (2x)
- C** Front brake calliper (2x, left/right)
- D** Hexagon screw for brake calliper (4x)
- E** Front brake pad wear sensor
- F** Front brake pad (1 set)
- G** Customer information
- H** Front brake guard plate (2x, left/right)
- I** Hexagon screw for brake guard plate (8x)

## 2. Rear axle parts list



G30 0001 V

### Legend

- J** Lightweight, perforated rear brake disk (2x, left/right)
- K** Hexagon socket screw for brake disk (2x)
- L** Rear brake calliper housing, partly assembled (2x, left/right)
- M** Rear brake calliper holder, partly assembled (2x, left/right)
- M'** Guide pin screws (2x each) double quantity (both on housing and on holder) 2x are not required
- N** Rear brake calliper design clip (2x)
- O** Hexagon screw for brake calliper (4x)
- P** Rear brake pad wear sensor (2 versions included in parts kit \*)
- Q** Rear brake pad (1 set, including pad guide plates)
- R** Rear brake guard plate (2x, left/right)
- S** Hexagon screw for brake guard plate (8x)

* Version	Part number	Car model	Overall length
<b>P1</b>	34 35 6 861 808	G11/G12/G30	approx. 920 mm
<b>P2</b>	34 35 6 861 809	G31	approx. 869 mm

### 3. Preparatory work

	ISTA No.
Conduct a brief test	---
Disconnect the negative terminal of the battery	12 00 ...
<b>The following components must be removed first of all</b>	
Front and rear wheel	36 10 300
Front brake pad wear sensor	34 35 001
Front brake pad	34 11 000
Front brake calliper	34 11 519
Front brake disk	34 11 220
Front brake guard plates (for 17-inch and 18-inch brake guard plates)	34 11 250
Rear brake pad wear sensor	34 35 003
Rear brake pad	34 21 200
Rear brake calliper	34 21 745
Rear brake disk	34 21 320
Rear brake guard plate (for 17-inch brake low guard plates and 17-inch brake high guard plates)	34 21 280
Rear brake guard plate (for 18-inch and 19-inch brake guard plates)	34 21 282

## 4. Front axle installation work

Install the following parts as described in the relevant ISTA number:

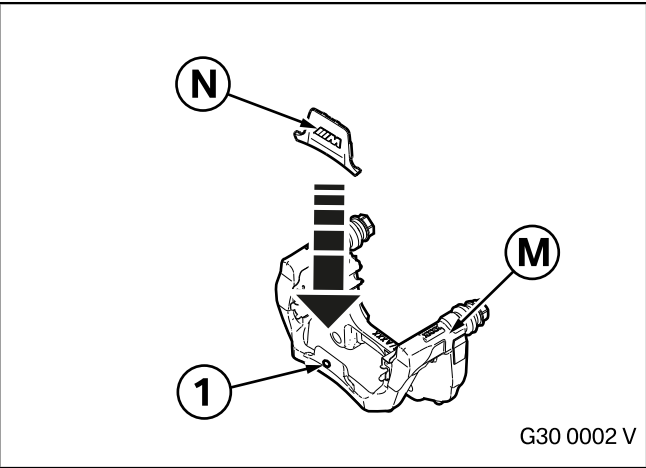
- Install front brake guard plates **H** using hexagon screws **I** as described in ISTA No. **34 11 250**
- Install front lightweight brake disks **A** using hexagram socket screws **B** as described in ISTA No. **34 11 220**
- Install front brake pads **F** using brake pad paste as described in ISTA No. **34 11 000**
- Install front brake calliper **C** using hexagon screws **D** as described in ISTA No. **34 11 519**
- Install front brake pad wear sensor **E** as described in ISTA No. **34 35 001**

5. Rear axle installation work

Install the following parts as described in the relevant ISTA number:

- Install rear brake guard plates **R** using hexagon screws **S** as described in ISTA No. **34 21 282**
- Install rear lightweight brake disks **J** using hexagram socket screws **K** as described in ISTA No. **34 21 320**
- Install rear brake pads **Q** using brake pad paste as described in ISTA No. **34 21 200**
- Remove guide spring screws **M'** from brake calliper holder **M**
- (these are not required, there are already screws on the brake calliper housing)
- Install design clip **N** on brake calliper holder **M** (see figure below)
- Install rear brake callipers **L** and **M** with hexagon screws **O** as described in ISTA No. **34 21 745**
- Install rear brake pad wear sensors **P** \* as described in ISTA No. **34 35 003**

* 2 versions included in parts kit (see EPC for installation details):			
Version	for model	Part number	Overall length
<b>P1</b>	G11/G12/G30	34 35 6 861 808	approx. 920 mm
<b>P2</b>	G31	34 35 6 861 809	approx. 869 mm



Place design clip **N** on the log and ensure that the spring hooks into the borehole (1) in the brake cal-liper holder **M**.




## 6. Concluding work and coding


The retrofit system requires programming/coding.

- Connect the battery
- Bleed the brake system with DSC as described in ISTA No. **34 00 050**
- Fit the front and rear wheels as described in ISTA No. **36 10 300**
- Encode the retrofit with the Software Service Station (SSS) via the – **Retrofit/Sport Brake** – path
- Conduct a brief test
- Carry out a function test (please use ISTA No. **34 00 ...** note the general instructions for running in new brake disks/brake pads).


The workshop certificate (see appendix) must be completed and given to the customer with customer information **G** and the TÜV report/parts approval.

The customer must be told that national acceptance and a modification of the vehicle's paperwork are required because the brake system data relevant for the approval have changed. Correct installation must be confirmed by an officially-approved expert or examiner.

 Important information for the customer: Run in the M Performance sport brake carefully for the first 200 km. After this, the full sporty characteristics of the brake system can develop.

 The design characteristics of the perforated brake disks mean that they may generate noise during use; however this does not affect the stability of the brake system. ◀

## 7. **Approved wheels**

 Only Original BMW alloy wheels of 19 inches or over may be used after the 19-inch M Performance sport brake has been installed. This also applies to winter wheels.

The current status of which wheels may be installed is set out in the EPC. ◀

## 8. Workshop certificate



# Workshop certificate M Performance Sport brake

### Part number

34 11 2 289 348

Front and rear axle sport brake retrofit kit

G11/G12/G30/G31

The M Performance sport brake has been installed as described in Installation Instructions No.

**01 29 2 411 430.**

### For G30/G31:

Extract from the EC type approval, part number **01 29 2 411 432** available on the ASAP).

Extract from EC type approval **e1\*2007/46\*1688\*00.**

### For G11/G12:

Extract from the EC type approval, part number **01 29 2 450 650** available on the ASAP).

Extract from EC type approval **e1\*2007/46\*0276\*14.**

"Sport brake retrofit" coding has been carried out.

Car model:

---

VIN:

---

Name and address of the vehicle keeper:

---

---

---

---

---

---

Place, date

---

Signature of person responsible

Dealership (company name / stamp)